

CURRICULUM LETTER

Year 6 - Autumn 2



Ted Wragg TRUST

Exwick Heights Primary School

Exwick Lane, Exeter, EX4 2FB Telephone Number: 01392 209030

Website: <https://exwickheights.devon.sch.uk> Email: admin@exwickheights.devon.sch.uk

Monday 11th November 2024

Dear Parents / Carers of Exwick Heights Year 6 pupils,

In **English**, we will deepen our understanding of narrative writing by looking at the book 'The Arrival' to create our own short stories using dialogue! We will then be using our knowledge of our class book (Holes) to write contrasting formal and informal letters from different characters' points of view.

Supporting learning at home: *Ensure that your child practises their weekly spellings and encourage regular handwriting practice!*



Our new class book is **'Holes' by Louis Sachar** - always a Year 6 favourite! **Reading** themes will include poetry and classic fiction.

Supporting learning at home: *As always, do encourage your child to read a range of books, both fiction and non-fiction. The benefits of reading cannot be underestimated. Ensure that your child sees you reading too!*

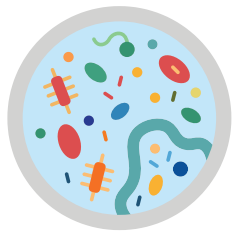
In **Mathematics**, we will be furthering the children's knowledge of **fractions, decimals and percentages**. We will simplify, order, add, subtract, multiply and divide fractions and mixed numbers, learn how fractions, decimals and percentages link and how to convert between these forms. The children will deepen their learning of decimals and be able to apply the four operations to calculations involving decimal numbers. Finally, we will look at finding percentages of amounts.

Supporting learning at home: *Please ensure that children are given opportunities to access Sparx and Sumdog regularly at home. The children must have secure timestable knowledge up to 12x12.*

$$\begin{array}{r} \text{KEEP CHANGE FLIP} \\ \frac{2}{9} \div \frac{1}{3} \end{array}$$

Our **Science** topic for this half term is **'Living Thing and their Habitats'**. We will explore how living things are classified using the principles developed by Carl Linnaeus and dive further into the different Kingdoms and what makes them unique. We will be completing an investigation looking at mould growth – a favourite with the children!

Supporting learning at home: *Immerse yourselves in the plant and animal kingdoms by discussing their characteristics. For example, birds have feathers, lay eggs and are warm-blooded. Could you watch some of David Attenborough's documentaries?*



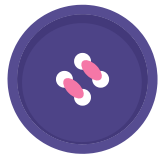
In **Geography**, we will be learning about **'Local Fieldwork'** which will involve formulating an enquiry question, gathering data, analysing the results and reaching conclusions. The children will develop their knowledge further by carrying out some fieldwork within and outside of our school grounds on 06.12.24.

Supporting learning at home: *Look at some different maps (online maps, paper maps, apps, SAT NAVs). Discuss with your child how to use them and why they are useful.*



REACH THE HEIGHTS

In **Design Technology**, we will be looking at **Textiles**! We will design and create our own waistcoats for toys, creating a pattern, exploring colour and developing our sewing expertise. We will use a range of sewing styles including running stitch and embroidery.



In our **outdoor Physical Education** sessions, we will build up our map reading skills and knowledge of compass positions when **orienteering**. The children will be building independence with these skills, finally using their knowledge to orienteer in small groups around our school site.

In our **indoor sessions**, children will work collaboratively in **dance** lessons to include more complex compositional ideas in their choreography. They will explore a variety of different dance styles including contemporary, modern and street dance.

Supporting learning at home: Encouraging physical fitness; this can take the form of encouraging your child to join an active club or simply just going for family walks!

Our **PSHE** this term is always a firm favourite as with the topic of **Celebrating Difference!** We will celebrate what makes us all special as individuals and will explore how perceptions of 'normal' can be dangerous and also differ. We will look at bullying and our collective responsibility to show kindness to all. Research into some famous activists is always a fun way to end the unit, with children choosing to research the likes of Rose Ayling-Ellis and Ellie Simmonds. We will also be celebrating Anti-Bullying Week during the 13th November.



Supporting learning at home: To support your child at home, please speak to your child about healthy and appropriate behaviours online, in particular on apps such as WhatsApp which are generally rated 13+. Reducing screen time can help with mental health too!

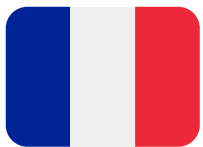


In **RE**, we will be looking at the big question **'Why do some people believe in God and some people not?'** We will look at the evidence for both sets of beliefs. Children will be encouraged to form their own opinions using evidence discussed in lessons and to have tolerance and respect for both sides of the debate.

Supporting learning at home: To support your child's learning in RE talk openly about different religions and cultures at home.

In our **Music** lessons, we will be looking at **'Performance Singing - Inter-related Dimensions of Music'**. Within this unit, the children will learn about musical elements such as pitch, duration, dynamics, tempo, timbre, texture, structure and notation. In **singing** lessons, children will be learning songs ready for our Christmas Carol concert! They are catchy so don't be surprised if they make their way home!

Supporting learning at home: Please encourage your child to practise the words for the songs they are learning in school.



In **French**, we use the scheme Salut to explore **Life in France!** Our lessons will include 'Where in France?', 'In Paris', 'Speaking French' and 'French Food'! We will continue to practise writing French as well as our speaking and listening too.

Supporting learning at home: There are lots of apps to help with language learning - try Duolingo with your child.

Christmas here we come! We will be in touch soon with more information about the festivities planned for the Christmas season.

If you have any questions about your child's learning, please do not hesitate to speak to your child's teacher directly or email admin@exwickheights.devon.sch.uk. If you have any concerns or want to bring something to our attention, please don't hesitate to ask one of us.

Yours sincerely,

Miss E. Baxter and Mrs S. Gamper-Clarke
Curie

Mrs C. Gwilt
Darwin

Miss M. Webber
Turing